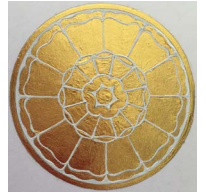


# THE CREATIVE DIMENSION TRUST

To enable young people of exceptional talent to learn fine hand skills with leading, international specialists



## WORKSHOP 2016 REVIEW



Patron: Sir Christopher Frayling



THE ERANDA ROTHSCHILD FOUNDATION



The Creative Dimension Trust is a charity registered in England and Wales No. 1166443  
email: [info@workshopuk.org](mailto:info@workshopuk.org) / website: <http://www.thecreativedimension.org>  
[Instagram](#) / [Twitter](#) / [Facebook](#)

WORKSHOP 2016 comprised five week-long workshops:



**Gilding and Marquetry** was hosted by the Royal Household. Here, students discovered the delicate art of working with ultra-thin layers of gold leaf. They also created edible art with chocolate.

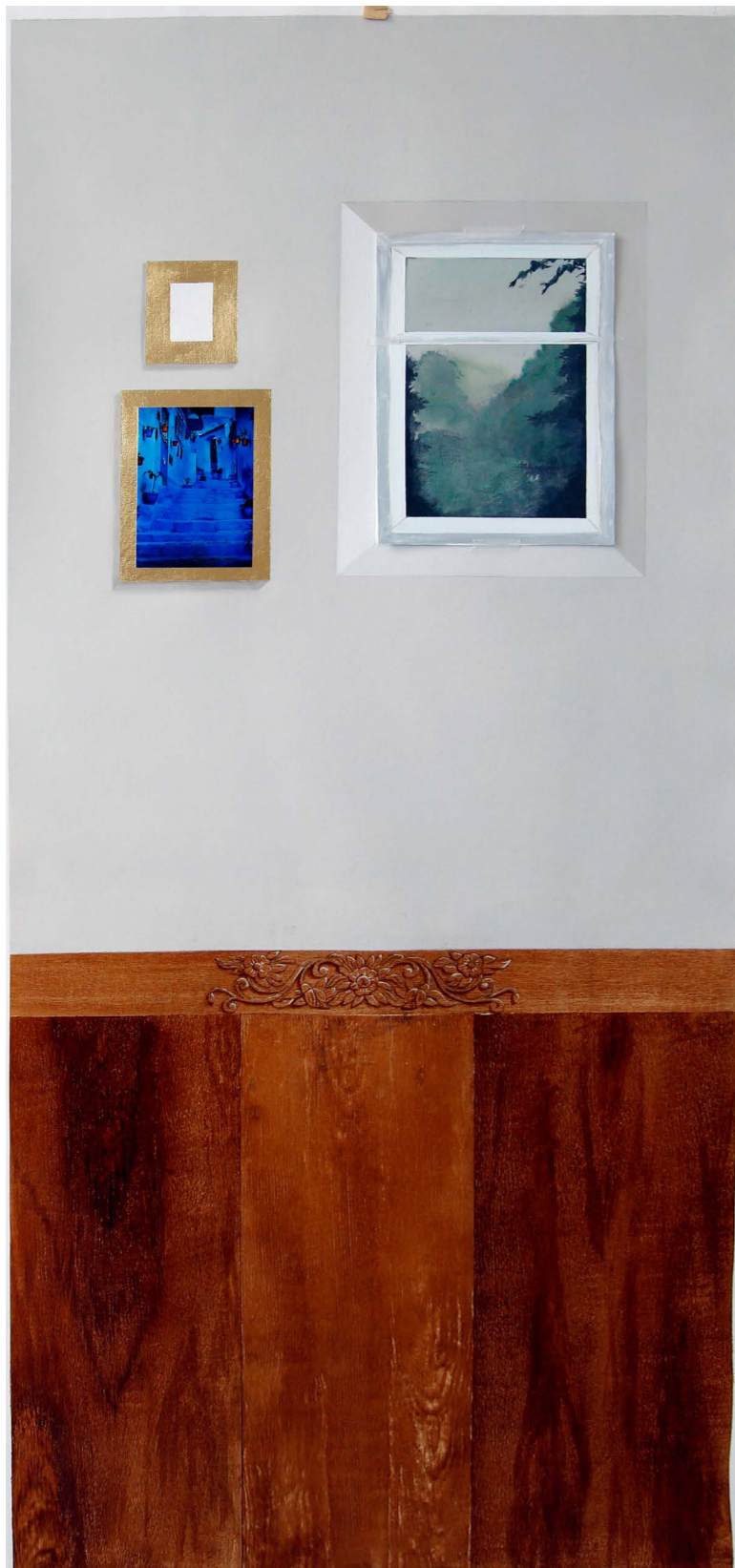


The Creative Dimension Trust is a charity registered in England and Wales No. 1166443  
email: [info@workshopuk.org](mailto:info@workshopuk.org) / website: <http://www.thecreativedimension.org>

**Mural painting** at City & Guilds of London Art School provided an opportunity to create 3D effects and optical illusions, such as woodgrain. One student said the biggest challenge was learning to slow down and focus on the details.

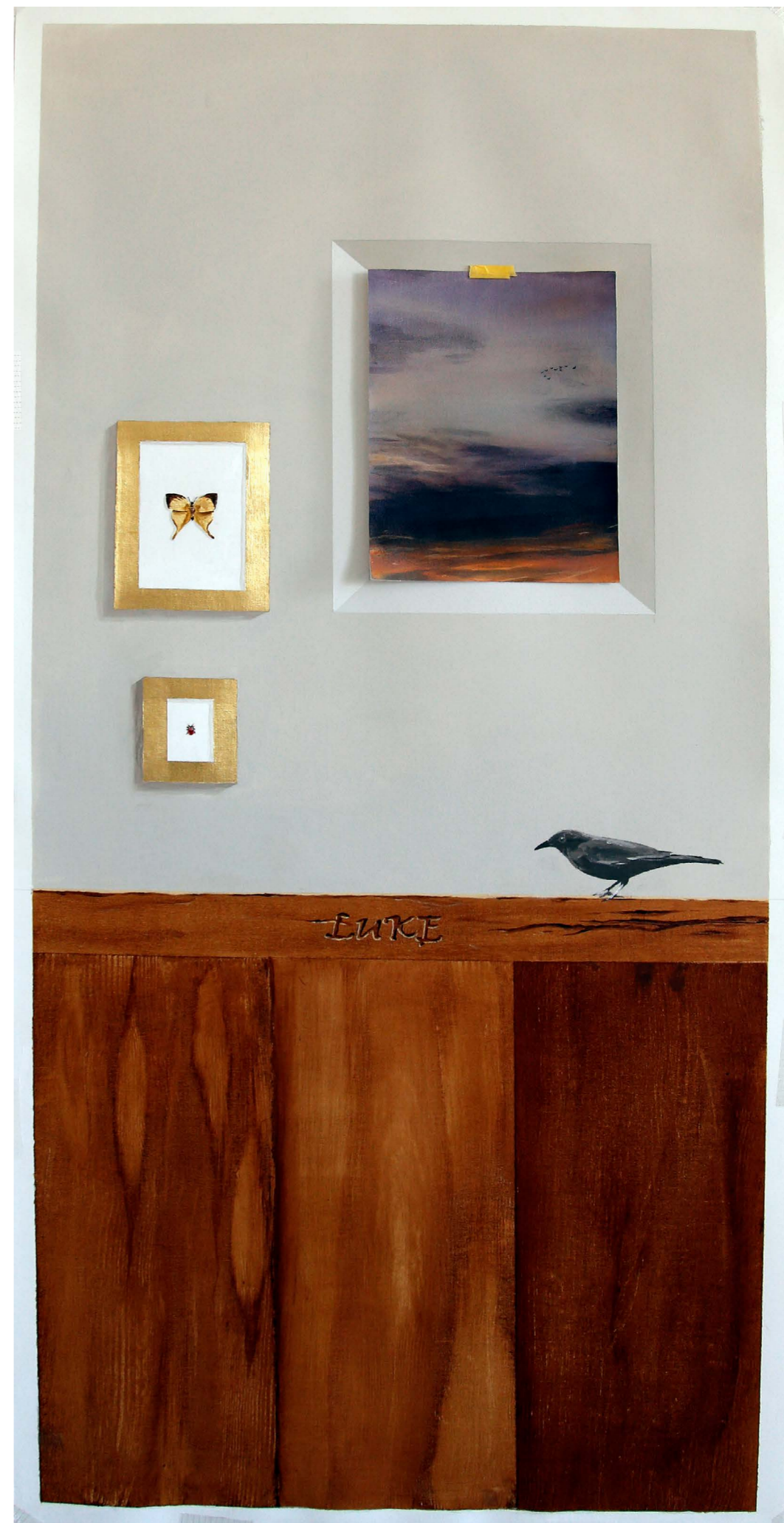


The Creative Dimension Trust is a charity registered in England and Wales No. 1166443  
email: [info@workshopuk.org](mailto:info@workshopuk.org) / website: <http://www.thecreativedimension.org>



*"I was so impressed by the work produced by the young people – some really stunning and mature results. They have really worked hard and I am sure that this will give them so much confidence in their abilities as well as some important skills. It's been a real pleasure to host the workshop and we look forward to working with you in the future"*

Tamiko O'Brien, Principal, City & Guilds of London Art School





**Wood work** at the Building Crafts College saw students learning the essential techniques of working with this most ancient of materials. The challenge here was the level of precision involved to ensure angles were accurate.



**Stoneworking**, again at the Building Crafts College, demanded a different sort of precision and also a great deal of collaboration to carve individual pieces of stone that would fit together to create an arch. Our time lapse footage shows how this was done, and was shared widely on social media.

Watch here: <https://www.youtube.com/watch?v=MKfPi41qz3Q>



**Hand engraving** at the Goldsmith's Centre required intense concentration and extreme precision to stop the blade slipping. Students were also inspired by a tour of Goldsmiths' Livery Hall.



### **Student and Parent feedback**

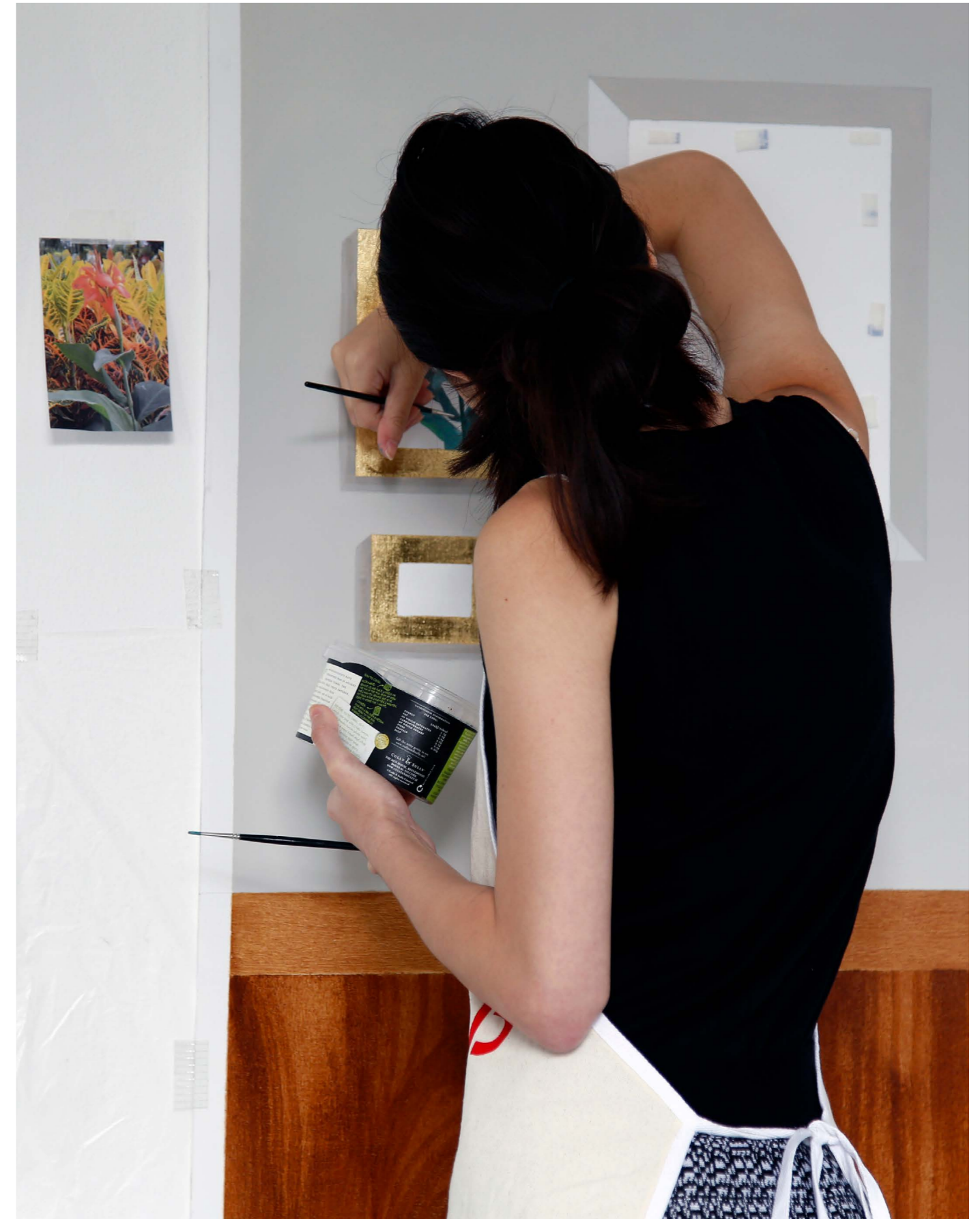
The feedback received from both students and their parents was overwhelmingly positive. Almost all believed they could learn a living with their hands. Everyone wanted to do another Workshop in the future, with stoneworking and sculpture, wood carving, metal engraving and working with glass, gold and silver among the favourites.



*"I am really grateful to be part of this whole experience and I hope that this carries on next year as I have learnt such valuable skills and knowledge."*  
**Student**



*"It was a challenge to produce work within a tight timescale. I'm glad it wasn't easy." Student*



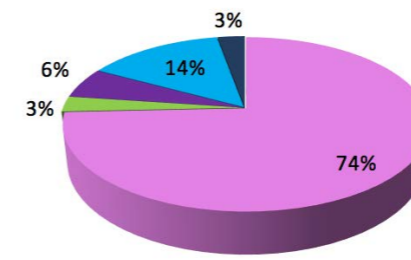
*"I had a great time and feel I have really benefitted from this experience. Continue the high standard as I felt the workshop was really good." Student*



*"I really believe in what you're doing in relation to traditional (and contemporary) craft skills, but more importantly in inspiring and engaging practical children in our society, where state education fails to address. The experiences my boys are having will be life-changing." Parent*

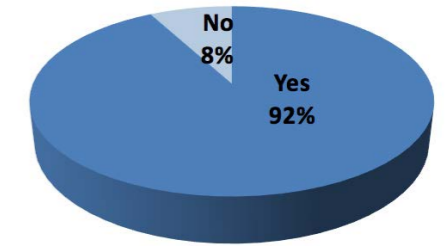


How did you find out about WORKSHOP 2016?



■ School/Teacher ■ Art Club ■ Friend ■ Did course last year ■ Online search

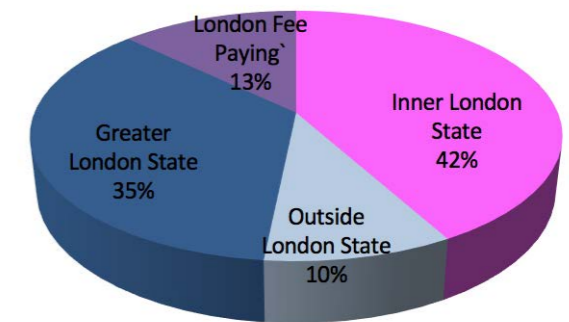
Do you think you could earn a living working with your hands?



Workshop Attendance



Schooling: where did our students come from?



### Arts Awards

Most students began working on Bronze or Silver Arts Awards with the support of the Crafts Council. Their work will continue into the autumn, and we will be tracking their progress. An integral component of the Arts Awards is the sharing of art and the development of leadership skills along with creative talent. This was demonstrated at the end of Workshop celebration event, hosted by the Crafts Council at The Hospital Club in Soho, which the students helped to organise.

## **The future**

The majority of students said they found out about the Workshops from their school - crucially, their art teachers. So, in the coming months the Trust will be working to expand its networks of schools and youth organisations.

We will keep in touch with our alumni as we plan next summer's Workshops and our Saturday Schools, which take place over six Saturdays either side of Spring half term. Further information on these will be available soon.



**The Creative Dimension Trust's Workshops would not have been possible without the support of our funders and supporters.**

Building Crafts College  
City & Guilds of London Art School  
Crafts Council  
Garfield Weston Foundation  
NADFAS  
The Carpenters' Company  
The Drapers' Company  
The Eranda Rothschild Foundation  
The Goldsmiths' Centre  
The Goldsmiths' Livery Company  
The Hedley Foundation  
The Prince's School of Traditional Arts  
The Royal Drawing School  
The Tallow Chandlers Company